

# AeroFlap™ Aerodynamic Mud Flaps

## APPLICATION

- The AF-19 is a 19" wide version sized specifically for wide-base tires
- The AF-24 is a 24" wide version sized specifically for dual single tire configurations



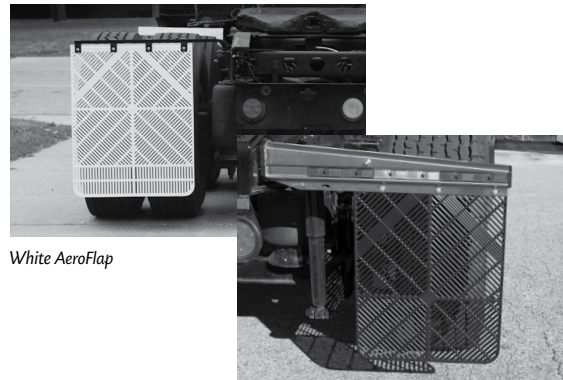
## FEATURES

- Unique pattern channels airflow in different, complimentary directions which saves fuel by reducing drag. Studies confirm a pair of non-aerodynamic mud flaps increases fuel consumption by .5 - 1%
- Reduces spray by not atomizing or "smashing" water droplets, creating a safer environment for everyone on the road
- Eliminates the need for anti-sail brackets
- Reduces maintenance costs by venting excess heat around tires and brakes
- Only aerodynamic mud flap designed for use with angled and shortie brackets
- Stacks neatly and nests on shipping skids
- Works in Synergy with U.S. EPA's Smartway Program for truck/trailer aerodynamics



## ORDER DETAILS

- Available in black or white
- Custom colors available upon request. Minimum order quantity and one time set-up fee may be required
- Available in 24", 30" and 36" lengths
- Packaged set includes 2 flaps and stainless steel mud flap hardware



MUD FLAPS

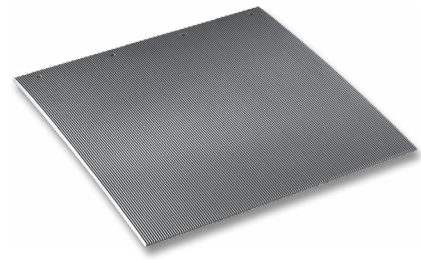
## SPECIFICATIONS

part no. - black	part no. - white	weight (lbs.)	description	width	length	package	pkg qty
<b>033-08052</b>	<b>033-08056</b>	2.70	AF-19, shortie	19.00"	24.00"	single	1
<b>033-08053</b>	<b>033-08057</b>	3.30	AF-19, shortie	19.00"	30.00"	single	1
<b>033-08050</b>	<b>033-08054</b>	2.90	AF-19, straight	19.00"	24.00"	single	1
<b>033-08051</b>	<b>033-08055</b>	3.50	AF-19, straight	19.00"	30.00"	single	1
<b>033-08000</b>	<b>033-08015</b>	3.30	AF-24, shortie	24.00"	24.00"	single	1
<b>033-08003</b>	<b>033-08016</b>	4.10	AF-24, shortie	24.00"	30.00"	single	1
<b>033-08005</b>	<b>033-08017</b>	4.90	AF-24, shortie	24.00"	36.00"	single	1
<b>033-08001</b>	<b>033-08007</b>	3.50/4.00	AF-24, straight	24.00"	24.00"	single	1
<b>033-08071</b>	—	35.00	AF-24, straight	24.00"	24.00"	packaged set	1
<b>033-08002</b>	<b>033-08009</b>	4.36	AF-24, straight	24.00"	30.00"	single	1
<b>033-08072</b>	—	35.00	AF-24, straight	24.00"	30.00"	packaged set	1
<b>033-08004</b>	<b>033-08011</b>	5.10	AF-24, straight	24.00"	36.00"	single	1

## 5/16" Anti-Spray Poly Mud Flaps

### FEATURES

- Formulated and blended with a unique compound of elastomers for greater cold weather resistance to cracking and tearing
- Four slotted holes conform to TMC specifications
- A straight ribbed pattern channels water downward to reduce road spray
- Reduces ice and snow build-up and stays effective longer



### ORDER DETAILS

- Part number represents one pair of flaps (bulk set)

### SPECIFICATIONS

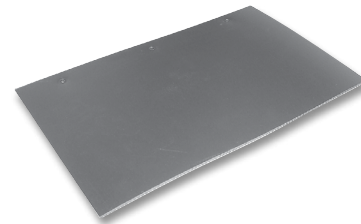
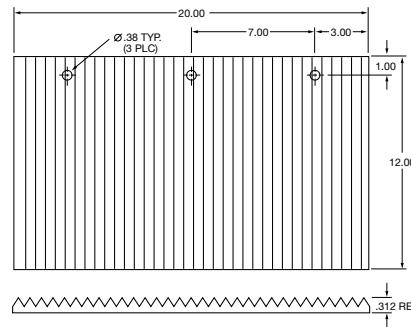
part no.	weight (lbs.)	width	length	color	package	pkg qty
<b>031-00677</b>	9.44	24.00"	24.00"	white	bulk set	1
<b>031-00680</b>	9.44	24.00"	24.00"	black	bulk set	1
<b>031-00678</b>	12.40	24.00"	30.00"	white	bulk set	1
<b>031-00681</b>	12.40	24.00"	30.00"	black	bulk set	1
<b>031-00679</b>	16.00	24.00"	36.00"	white	bulk set	1
<b>031-00682</b>	16.00	24.00"	36.00"	black	bulk set	1

MUD FLAPS

## Mud Flap for Spray Master FRX-19 Full Round Fenders

### FEATURES

- 20" x 12" black anti-spray flap



### SPECIFICATIONS

part no.	weight (lbs.)	width	length	color	package	pkg qty
<b>033-02254</b>	1.80	20.00"	12"	black	single	1

## 3/16" Poly Mud Flaps

### FEATURES

- Formulated and blended with a unique compound of elastomers for greater resistance to cold weather cracking and tearing
- Stays cleaner longer and are resistant to road chemicals, grease, oil, fuel, and salt
- Four slotted holes conform to TMC specifications



### ORDER DETAILS

- Special sizes available upon request
- Part number represents one pair of flaps (bulk set)

### SPECIFICATIONS

part no.	weight (lbs.)	width	length	color	package	pkg qty
<b>031-00635</b>	6.70	24.00"	24.00"	white	bulk set	1
<b>031-00638</b>	6.64	24.00"	24.00"	black	bulk set	1
<b>031-00636</b>	8.32	24.00"	30.00"	white	bulk set	1
<b>031-00639</b>	8.32	24.00"	30.00"	black	bulk set	1
<b>031-00637</b>	10.00	24.00"	36.00"	white	bulk set	1
<b>031-00640</b>	10.00	24.00"	36.00"	black	bulk set	1

MUD FLAPS

## 3/16" and 5/16" Custom Poly Mud Flaps

### FEATURES

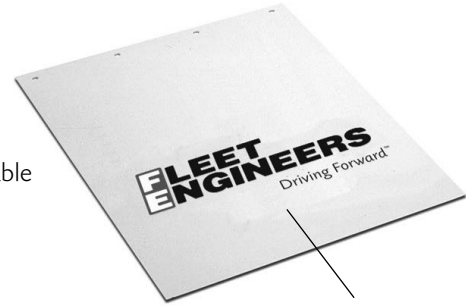
- Hot stamped with your name, logo, trademark, etc.
- Mylar hot stamping process assures long life of lettering and trademarks
- Four slotted holes conform to TMC specifications
- Imprinted message available in many standard foil colors
- Up to three lines of 2.00", 3.00", or 4.00" height straight block lettering available

### ORDER DETAILS

- Part number represents one pair of flaps (bulk kit)

### HOW TO ORDER (DISTRIBUTORS/DEALERS)

- Please furnish clean black and white artwork, a business card, or other printed material that clearly shows logo and the colors you want reproduced
- Create a rough sketch using flap grid diagram to indicate placement of art, lettering, and/or logo
- All art, lettering and/or logos must fit into 18.00" x 18.00" imprint area
- Please print your custom lettering message clearly
- Initial minimum order is 50 pairs, repeat minimum order is 25 pairs
- Fax or email completed order to (231) 777-2720 or salesorders@fleetengineers.com



Your CUSTOM LOGO or LETTERING here

MUD FLAPS

### SPECIFICATIONS FOR 3/16" CUSTOM MUD FLAPS

part no.	weight (lbs.)	thickness (in.)	width	length	color
031-00653-	6.64	3/16"	24.00"	24.00"	white
031-00654-	8.29	3/16"	24.00"	30.00"	white
031-00655-	9.96	3/16"	24.00"	36.00"	white
031-00656-	6.64	3/16"	24.00"	24.00"	black
031-00657-	8.29	3/16"	24.00"	30.00"	black
031-00658-	9.96	3/16"	24.00"	36.00"	black

### SPECIFICATIONS FOR 5/16" ANTI-SPRAY CUSTOM MUD FLAPS

part no.	weight (lbs.)	thickness (in.)	width	length	color
031-00695-	8.80	5/16"	24.00"	24.00"	white
031-00696-	10.80	5/16"	24.00"	30.00"	white
031-00697-	12.80	5/16"	24.00"	36.00"	white
031-00698-	8.80	5/16"	24.00"	24.00"	black
031-00699-	10.80	5/16"	24.00"	30.00"	black
031-00700-	12.80	5/16"	24.00"	36.00"	black

#### Initial Custom Order Set-Up Charges

- Fifty pair minimum, a one-time set-up charge for custom lettering, logos, and artwork
  - Normally, one imprint plate is used for each color
  - Additional plates may be necessary for large images
- part no. 031-AC001** First plate  
**part no. 031-AC002** Second plate  
**part no. 031-AC003** Third plate
- The first imprint plate is free on orders of 200 pairs or more
  - Consult price list for plate charge

#### Standard Foil Colors

Color	Standard P.M.S. Equivalent
Black	3-2X
Medium Blue	293
Medium Brown	471-2X
Green	354-2X
Gray	429
Orange	021
Red	032
Red/Orange	172
White	
Yellow	108

Download our Custom Mud Flap Order from online at [www.fleetengineers.com/ordermudflaps](http://www.fleetengineers.com/ordermudflaps)

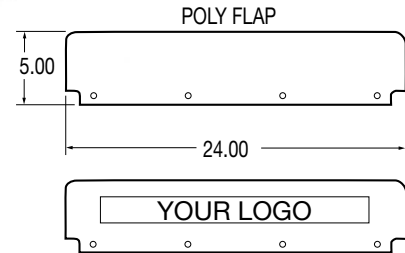
## Top Flaps With OEM Logo or Custom Stamped With Your Logo

### FEATURES

- Made of .12" thick durable poly blend material
- Mylar hot stamping process assures long life of lettering and trademarks

### ORDER DETAILS

- Choice of stainless or steel-plated mounting hardware
- Flap packaged sets contain two top flaps and flap hardware packaged set
- Hardware packaged set includes eight nuts, eight carriage bolts, and eight washers in a plastic bag



### SPECIFICATIONS

packaged set part no.	weight (lbs.)	description	hardware construction	flap color	logo color	package	pkg qty
031-00302	1.20	Fleet Engineers	stainless steel	white	black/red	packaged set	1
031-00315	1.20	Fleetrite	stainless steel	white	black	packaged set	1
031-00304	1.20	Freightliner	stainless steel	white	black	packaged set	1
031-00306	1.20	International	stainless steel	white	black	packaged set	1
031-00309	1.20	Kenworth	stainless steel	white	red	packaged set	1
031-00962	1.20	Mack	stainless steel	white	black	packaged set	1
031-00964	1.20	Mack	stainless steel	black	gray	packaged set	1
031-00305	1.20	Peterbilt	stainless steel	white	red	packaged set	1
031-00980	1.20	Sterling	stainless steel	white	black	packaged set	1
031-00931	1.20	Volvo	stainless steel	white	blue	packaged set	1
031-00319	1.20	Western Star	stainless steel	white	black	packaged set	1
031-00243	1.20	Fleet Engineers	zinc plated steel	white	black/red	packaged set	1
031-00256	1.20	Fleetrite	zinc plated steel	white	black	packaged set	1
031-00245	1.20	Freightliner	zinc plated steel	white	black	packaged set	1
031-00247	1.20	International	zinc plated steel	white	black	packaged set	1
031-00250	1.20	Kenworth	zinc plated steel	white	red	packaged set	1
031-00961	1.20	Mack	zinc plated steel	white	black	packaged set	1
031-00963	1.20	Mack	zinc plated steel	black	gray	packaged set	1
031-00246	1.20	Peterbilt	zinc plated steel	white	red	packaged set	1
031-00981	1.20	Sterling	zinc plated steel	white	black	packaged set	1
031-00932	1.20	Volvo	zinc plated steel	white	blue	packaged set	1
031-00260	1.20	Western Star	zinc plated steel	white	black	packaged set	1

TOP FLAPS

**For a Custom Top Flap, please contact your Fleet Engineers Representative or call 1-800-333-7890**

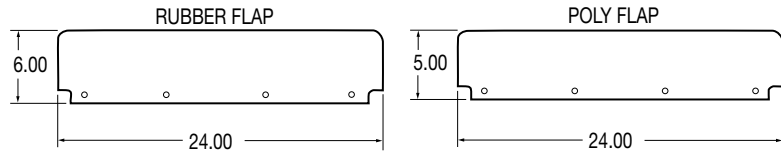
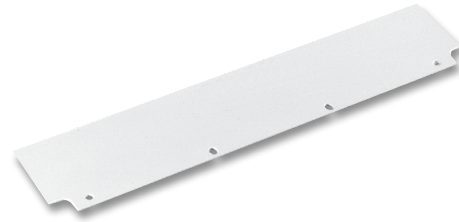
## Plain Top Flaps

### FEATURES

- Made of .12" thick durable poly blend material

### ORDER DETAILS

- Your choice of stainless or zinc plated steel mounting hardware
- Hardware packaged sets includes eight nuts, eight bolts, and eight washers
- Flap packaged sets contain two top flaps and flap hardware packaged set



### SPECIFICATIONS

part no.	weight (lbs.)	description	hardware construction	flap color	package	pkg qty
031-00301	3.70	plain rubber	stainless steel	black	packaged set	1
031-00242	3.70	plain rubber	zinc plated steel	black	packaged set	1
033-00011	1.70	plain rubber	none	black	single	1
031-00311	1.20	plain poly blend	stainless steel	white	packaged set	1
031-00252	1.20	plain poly blend	zinc plated steel	white	packaged set	1
033-00422	0.45	plain poly blend	none	white	single	1
031-00320	1.20	plain poly blend	stainless steel	black	packaged set	1
031-00261	1.20	plain poly blend	zinc plated steel	black	packaged set	1
033-00430	0.45	plain poly blend	none	black	single	1

TOP FLAPS

## Top Flap Hardware

### APPLICATION

- For use with plain, custom, or OEM logo flaps

### ORDER DETAILS

- Choice of stainless or zinc plated steel
- Includes eight nuts, eight carriage bolts, and eight washers in a plastic bag



### SPECIFICATIONS

part no.	weight (lbs.)	hardware construction	package	pkg qty
031-00414	.30	zinc plated steel	packaged set	1
031-00415	.30	stainless steel	packaged set	1